

ALLIANCE SERVICES AND PARTNERSHIPS

ALLIANCE SERVICES

- Laser Welding
- Laser Engraving
- Laser Welding Machine Sales
- Micro Welding
- Complete SPI/SPE
- Micro Polishing
- Mold Repair
- Superfinish Cylindrical Grinding
- Sandblasting

DURO-CHROME

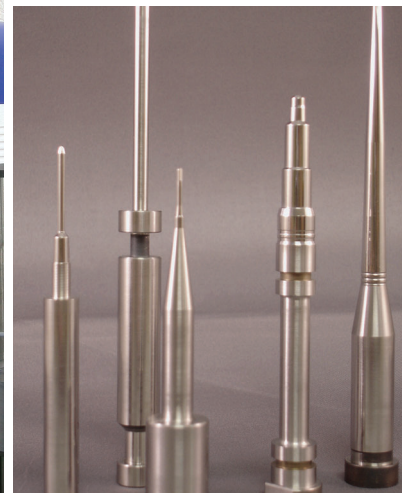
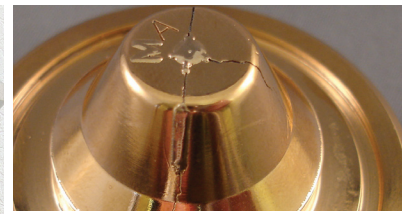
- Hard Chrome Plating
- Electroless Nickel Plating
- Dia-Clust
- Blanchard Grinding
- MicroTuff Coating

HOMMER TOOL

- Custom Mold
Ready Components
- O.D. Grinding
- I.D. Grinding

PROGRESSIVE COMPONENTS

- Replacement Pins
- MoldTrax



MAKING SURE OUR CUSTOMERS GET THE BEST RESULTS

We take pride in offering our customers the best service and results possible for their jobs. From mold repair and laser welding to chrome plating and finishing, either we handle it ourselves or we have formed an alliance with some of the industries most well known and respected companies to ensure our customers receive the highest level of quality.

Currently Alliance is the only mold repair and maintenance facility that can handle all of the potentially necessary applications all in one location including laser welding as well as laser engraving services.

We want to stress that, we do not build molds. We are not trying to compete with existing mold shops, our goal is to be a resource to you and your customers to make your job easier, faster and more efficient.

All of our intricate component manufacturing needs are handled by Hommer Tool.

Progressive Components supplies us with any replacement pins, and component parts necessary for your job. We are also utilizing their MoldTrax software to monitor your jobs needs.

Duro-Chrome Industries is our preferred vender for all plating needs. We have been working with them for over 30 years, bringing our customers unmatched results.

